

# JORDANI CONSULTING GROUP

## CASE STUDY

### SPACE System Highlights

Web deployment provides company-wide access to SPACE data. User roles control access to graphic and tabular data.

Web interface uses state of the art technology including a robust implementation of GIS based systems for navigation and presentation of business content.

Core Abbott Property Database provides consistent data model to other divisions at Abbott including Telecom, Real Estate, and Finance.

Implementation includes unique space classifications and calculations for Building Common, Office, Lab, Manufacturing, and Warehouse space.

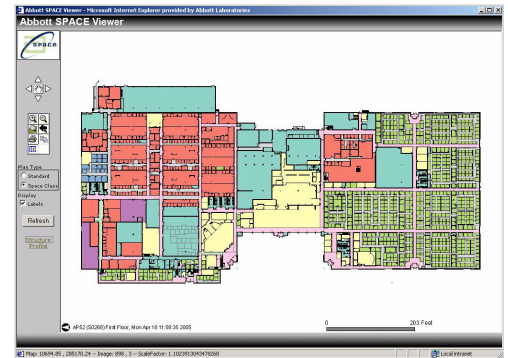
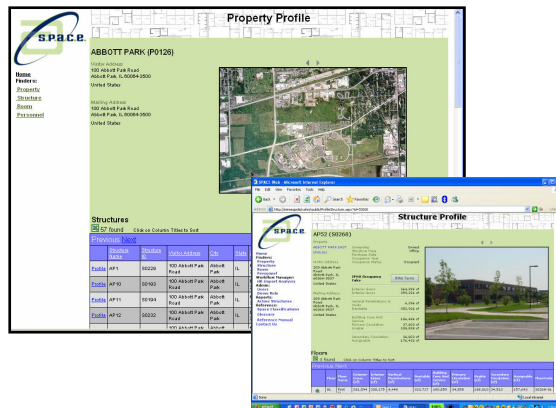
Web-enable HR Workflow Manager allows for online tracking of research status.

## Abbott Laboratories Global Engineering Services SPACE Management System

A Fortune 100 international health care company that discovers, develops, manufactures and markets products and services that span the continuum of care, Abbott Laboratories places enormous demands on its Global Engineering Services Division (GES) for facilities and infrastructure support

Within GES, the Facility Planning Group is tasked with the preparation of an annual inventory and census of Abbott facilities. That information is combined with anticipated use for the coming year along with other longer-range projections to produce recommendations for use of and acquisition or disposition of facilities. This annual effort links facility planning and capital development policies with the corporation's organizational and business objectives. This business function is heavily dependent upon accurate up-to-date information about Abbott facilities and how they are used. Current data on the location, use and occupancy characteristics of facilities are central to this activity.

As a result of the requirements study, JCG recommended the implementation of information systems to improve space management process at Abbott. JCG developed detailed functional requirements and guided the process of evaluation and selection of a commercial space management information system. Abbott has subsequently asked JCG to customize the integration of that system including the deployment of a state of the art 'SPACE' web site that includes GIS viewing technology to provide decision makers with more timely and actionable information about space.



The focus of the implementation at Abbott is space management. Creating a shared facility inventory has been the first step including the incorporation of Abbott's worldwide property portfolio, detailed site and room level data including CAD files, for approximately 12 million SF on the corporate complexes in Lake County, IL. Information on 19,000 employees is used in concert with the facility inventory to support key space management business functions. An interface has been established with systems in Human Resources to support the implementation. Procedures have been deployed to maintain data quality and integrity in the throws of a 60% churn rate. Abbott is preparing to implement Web based employee self service move management as part of the maintenance strategy.

